



Mixed feed industry

We build solutions.



Mechanics - Electrical engineering - Information Technology

SCHULZ Systemtechnik GmbH, leading developer of automation solutions for various industries, was founded in 1954 in Lower Saxony Visbek. What began as a classic craft business for electrical installations, has now developed into an internationally operating group of companies.

SCHULZ Systemtechnik combines all three branches of automation technology – from mechanics and electrical engineering up to information technology,

thus covering the entire value chain from a single source. Specially tailored solutions are created for respective customers, from companies within the SME sector to large-scale industry. Extensive synergies within the group of companies as well as extensive knowledge and expertise in the various sectors and their techniques are essential advantages.

**From consulting to
service.**



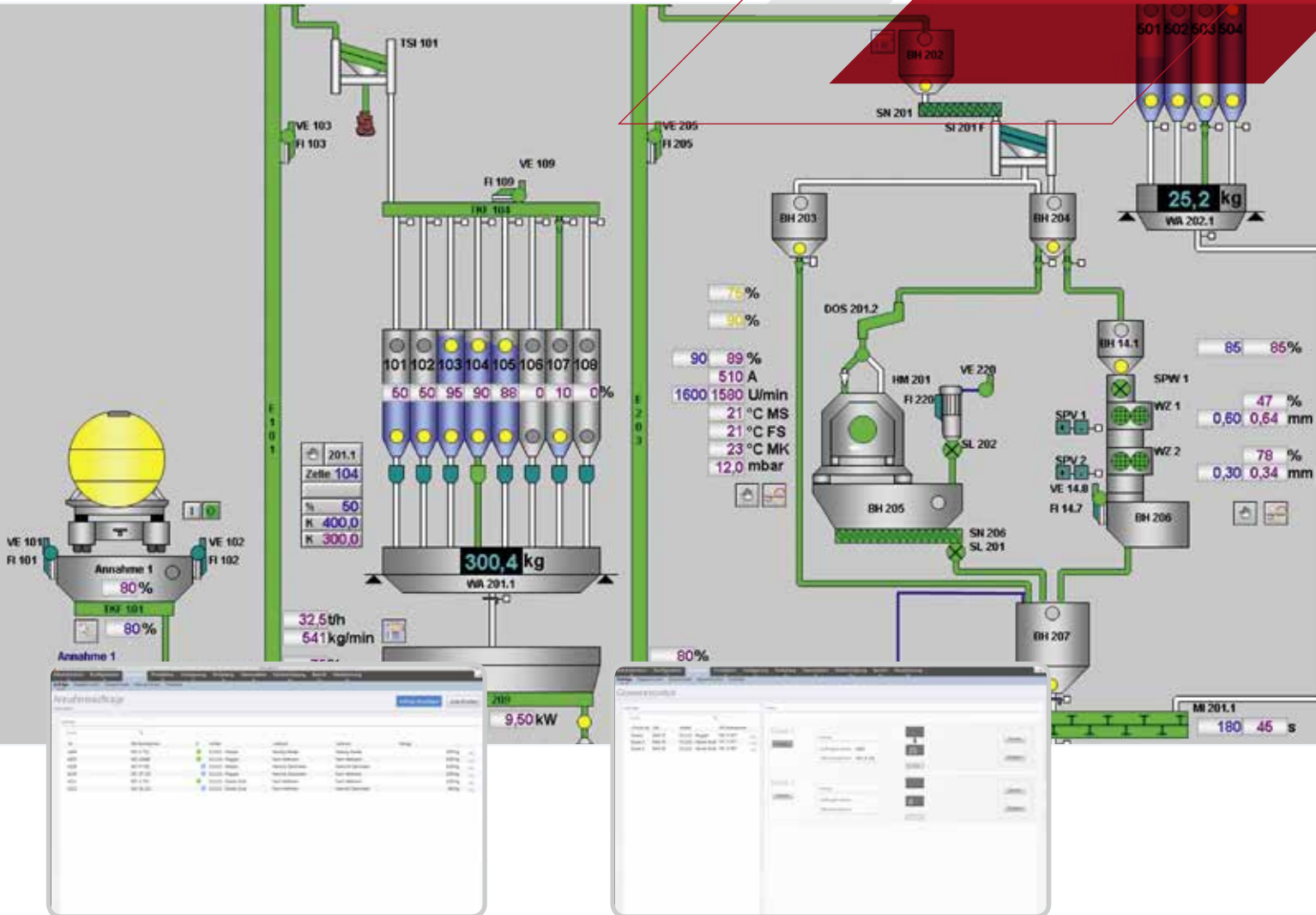
Our services

SCHULZ is a key supplier for European agriculture and has been providing automation technology for the mixed feed industry since 1980.

Our service portfolio includes complete solutions, from design through to implementation and service.

- > Consulting, planning, designing, documentation
- > Programming, visualisation
- > Supply of switchboards
- > Installation
- > Connection to ERP systems
- > Commissioning, training
- > Remote diagnostics
- > 24-hour service

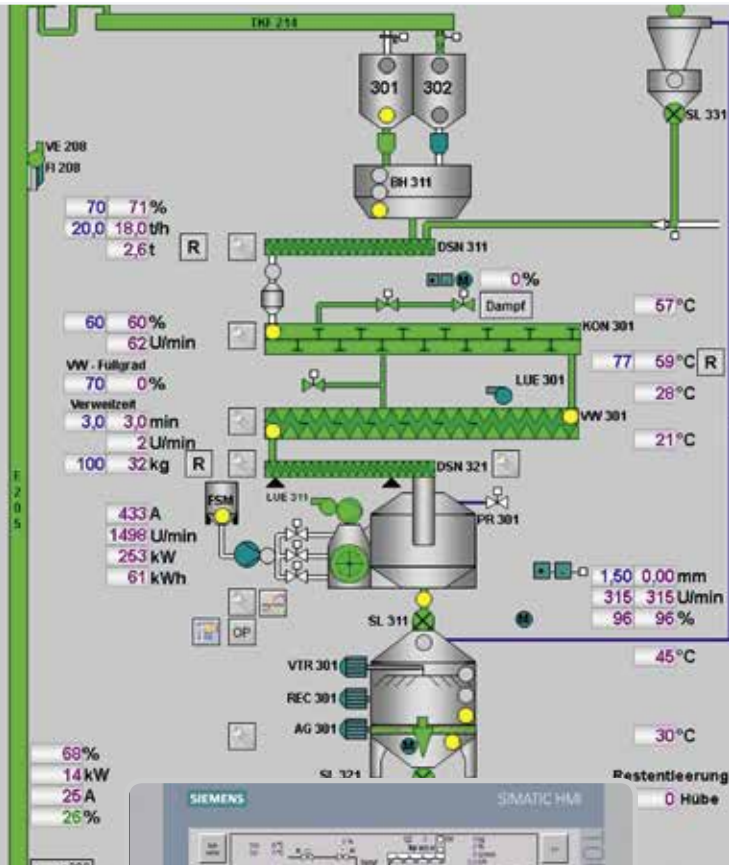
Everything is supplied from a single source.



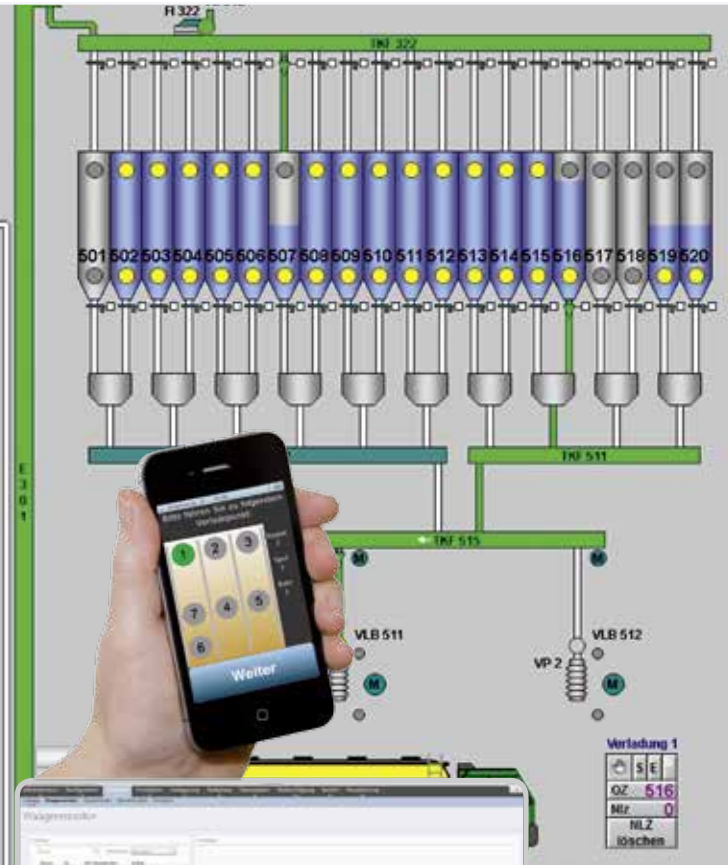
Module for logging raw material acceptance

Customer specific control of dosing and mixing processes, including molassing and liquid dosing

For maximum process reliability



Control of all relevant press parameters with automatic check of flow rates and conveying paths



Customer specific control of finished goods loading, including load detection via weigh bridge

SCHULZ

productionstar



Our star in the manufacturing process:

- > **Full control** - traceability down to the last unit
- > **Maximum flexibility** - Modular design up gradable to almost any system
- > **Sustainably safe** - Easy upgrade to future system requirements

SCHULZ *productionstar* is the name of our new, innovative MES and process control system to automate all processes in industrial production. Based on over 15 years of experience with the previous ProControl system, it brings production technology into a new era. More than ever before, SCHULZ *productionstar* can now interlock the entire manufacturing process with the latest IT, making your production fit on the path to industry 4.0.

SCHULZ *productionstar* is convincing thanks to:

Intuitive operation

- > Modern surface design adapted to Windows standard
- > Short learning curve
- > Prevention of operating errors

Update and upgrade capability

- > Investment protection through problem-free software

- customisation and performance improvements
- > Database independent

Mobile system control

Product features and benefits

- > Traceability down to individual units
- > Data acquisition, analysis and optimisation
- > Modular construction system with core modules and retrofittable expansion modules
- > Production scheduler
- > Production planning full transparency
- > Fast error diagnosis through process analysis
- > External device connection
- > Energy savings

Focus on a customer project



Mathias Schröder,

Plant Manager of UNA HAKRA
Hanseatische Kraftfuttergesellschaft mbH

» When we thought about changing our system control, we believed that, due to the complexity of our system and the presence of complicated, traditional structures, this step could be taken only with the previous control system suppliers. Yet we were fully elucidated on SCHULZ Systemtechnik's offer.

A fair offer price, the willingness to implement our required programme sequences and the innovative products already available in SCHULZ standard led us to opt for SCHULZ's solution. In addition, a crucial point was the delivery of a system "from a single source".

With this change, even old power units had to be reconverted, and both the PLC and control level had to be replaced with SCHULZ's ProControl. In the process, the system was unavailable only from Friday evening to Monday morning for conversion and commissioning. Together with SCHULZ specialists, the programme processes were discussed in detail based on our functional

specification document in advance, and the conversion measures divided into individual steps, to finally create an adequate time schedule.

My conclusion: All start-ups have worked brilliantly, the implementation of the required programme sequences has been exemplary, and the willingness to discuss and fulfil the current need for adjustments has always been present. Incidentally, in addition to the new control functionalities, the efficiency of the plant was increased by 20 – 30 %.«



SCHULZ Systemtechnik GmbH

Schneiderkruger Str. 12
D-49429 Visbek / Germany
phone +49 4445 897-0
fax +49 4445 897-300
info@schulz.st

www.schulz.st